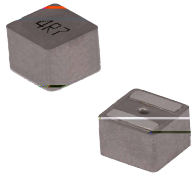


# MDTA Series

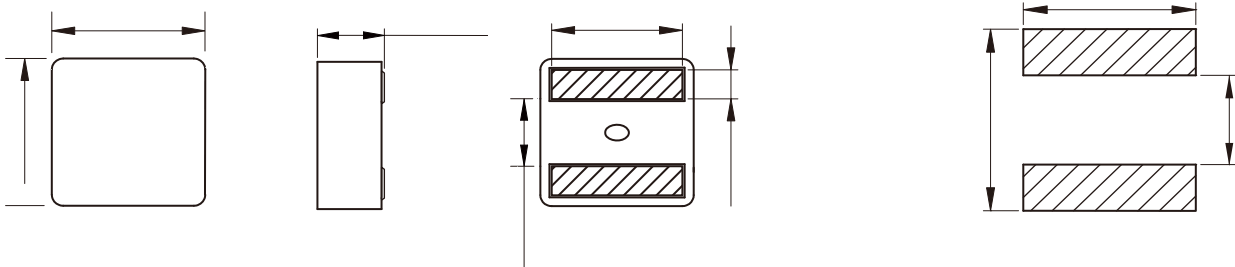


## FEATURES

- Flat wire coil for low copper losses
- #
- †
- High current capability
- AE# j
- \ C @
- j

## APPLICATION

- ) # ) #
- Noise suppressor for motor
- wipers / power seats/
- Q) ers



Part No	L@100KHz /0.1V (µH)	Tolerance	I <sub>SAT</sub> Typ. (A)	I <sub>R</sub> (A)		R <sub>DC</sub> Max. (mΩ)
				20°C rise	40°C rise	
U) u° k U		±20%				
U) u° k U		±20%				
U) u° k U		±20%				
U) u° k U		±20%				
U) u° U		±20%				
U) u° U		±20%				
U) u° U	22	±20%				
U) u° U		±20%				



